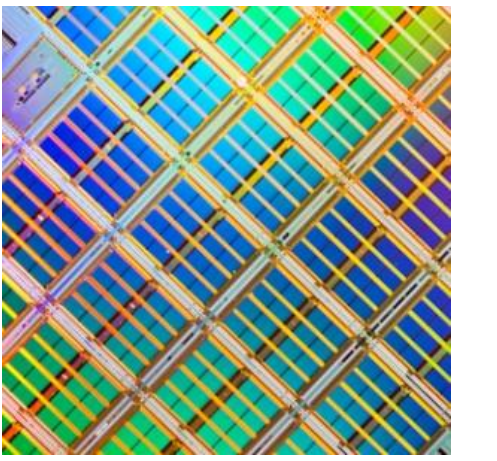


# S.C.E. Partners

Client Driven. Client Lead.



Investment Banking for Semiconductors, IT & Electronics Supply

Emerging Technologies Coverage Landscape

July 2020

# EMERGING TECHNOLOGIES LANDSCAPE 2020

## Space/ET



## Quantum Computing



## AR/VR/MR



## Cyber Security



## Materials



## 5G



## AI/ML



## IoT



## Data Infrastructure/Cloud



## Robotics



# Disclaimer

This document and its contents are the copyright of Semi+Cap Equity Partners, LLC ('SCE Partners') and are authorized for first party use only. Any commercial redistribution or commercial reuse of any kind is expressly prohibited without prior consent of SCE Partners.

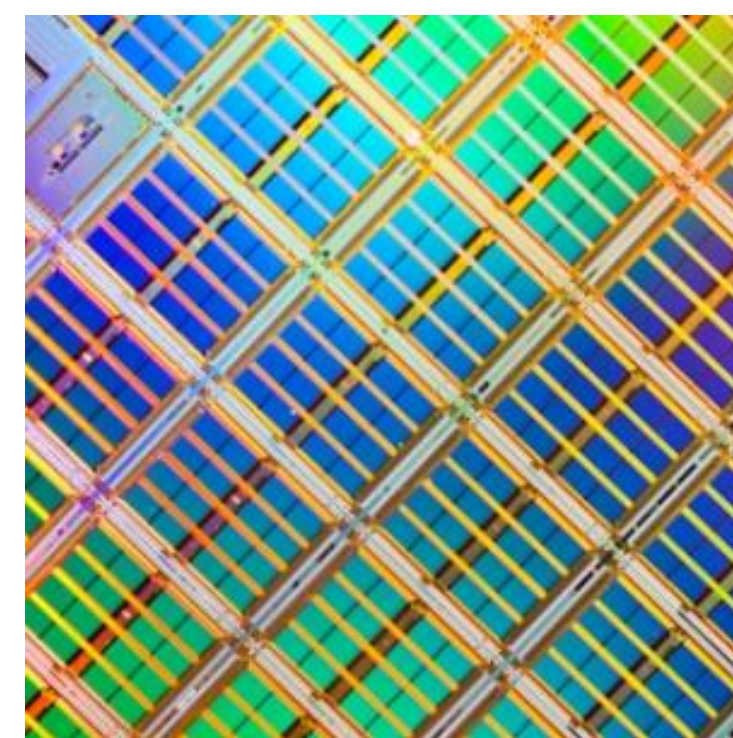
This document is an outline of matters for education and/or discussion only. This document does not constitute an offer to buy or sell securities and should not be interpreted as advice, including legal, tax, investment or accounting advice. This presentation may include statements that represent opinions, estimates and forecasts that may not be realized. We believe the information provided herein is reliable, as of the date hereof, but do not warrant accuracy or completeness.

In preparing these materials, we have relied upon and assumed, without independent verification, the accuracy and completeness of all information available from public sources such as WSTS classification and other publicly available data sources, and we maintain no obligation to provide any such verification.

Nothing in this document contains a commitment from SCE Partners to subscribe for securities, to provide debt, to arrange any facility, to invest in any way in any transaction or to advise related thereto or as described herein.

Nothing herein imposes any obligation on SCE Partners to update or amend any information contained herein at any time or to provide any warrantee, expressly or otherwise.

Broker-dealer services from SCE Partners are provided through Pickwick Capital Partners, LLC; investment banking transactions may be executed through affiliates or other broker-dealers, either under industry standard agreements or by the registration of certain associated persons.



Semi+Cap Equity Partners, LLC.

Securities sold through Pickwick Capital Partners LLC, member FINRA /SIPC  
For Institutional Use Only

San Francisco, California | Phone 415.295.4785

[www.semicap-equities.com](http://www.semicap-equities.com)